

Bi-Fold Bolster Bar

Structural, Fabrication & Installation Guide



the **complete** solution

CONTENTS

Section 1 : Introduction

Section 2 : Span Tables

Section 3 : Fabrication Details

Section 4 : Installation Details



Section 1 : Introduction

The Bi Fold Bolster bar is a 70mm aluminium box section that is powder coated and thermally broke with resin blocks. This bi folding support system is only fitted locally above & around the bi-folding door, giving structural support only where needed, creating a 'goal post support system'.

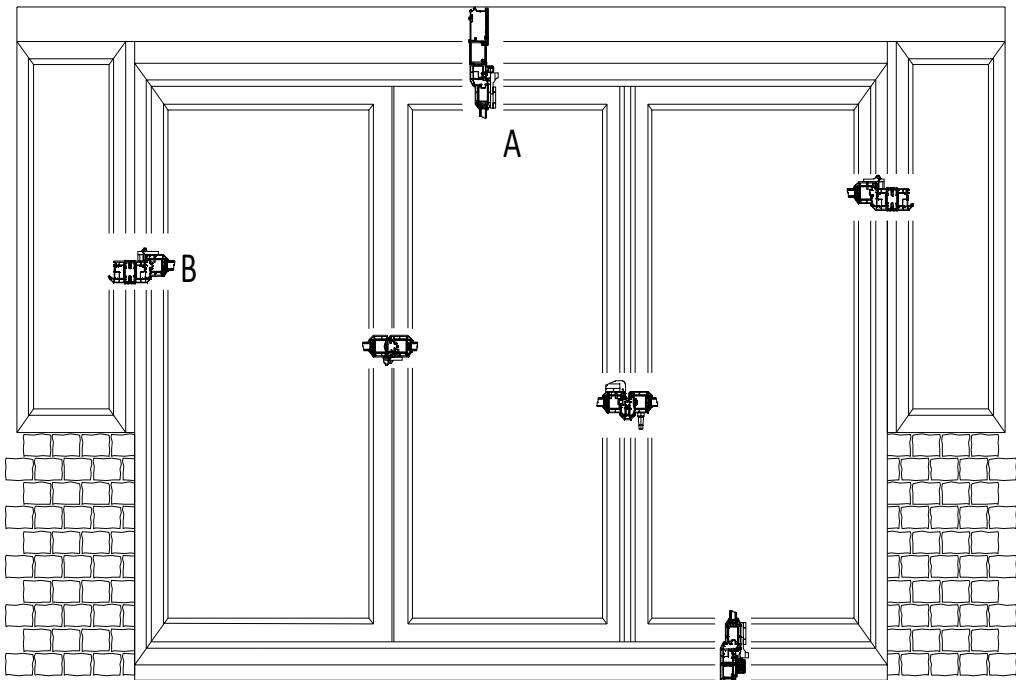
If the Bi Fold Bolster bar is being used with a Eurocell roof & Eurocell 70mm window system, then the butt joint EWS528A should be used to create a 'goal post support system'. If the Bolster Bar is being used with a non Eurocell window system please ensure a suitable loading bearing coupler/butt joint is used.

When ordering Bi folding doors please deduct 70mm from overall height of the doors to allow for the Bi Fold Bolster Bar

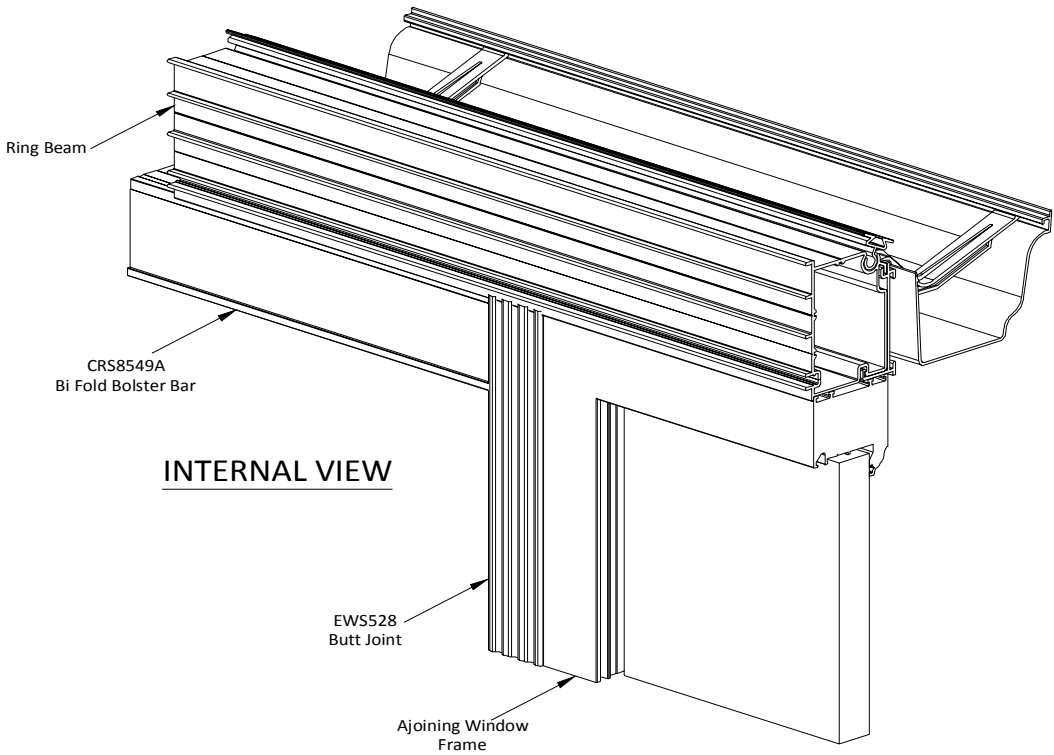
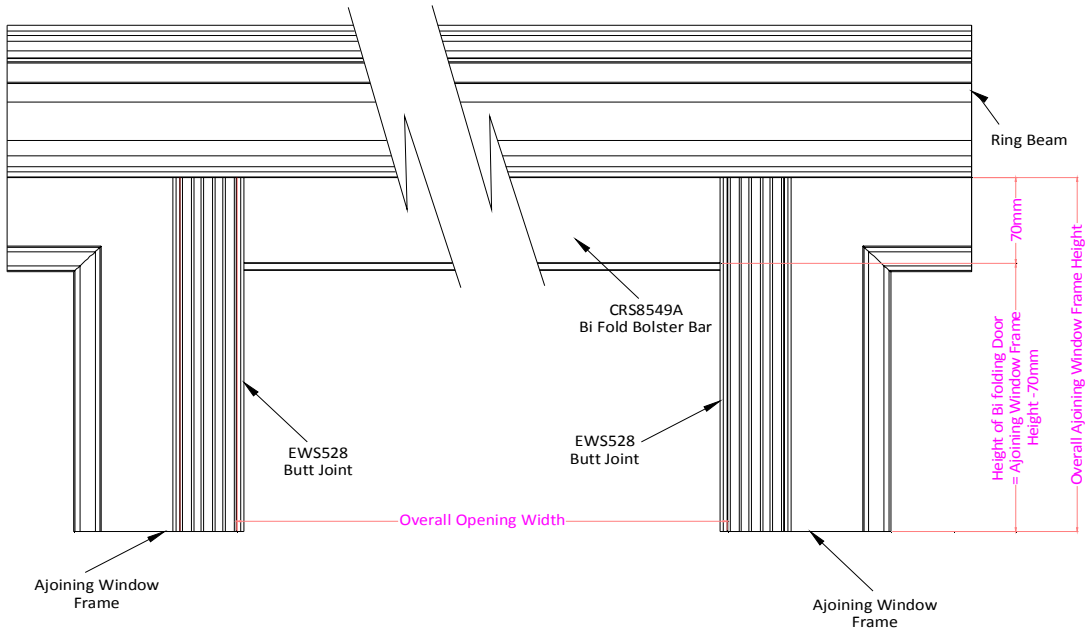
The Bi Fold Bolster Bar gives full Structural support of folding & sliding doors.

Suitable for roof pitches between 5 & 35 degrees.

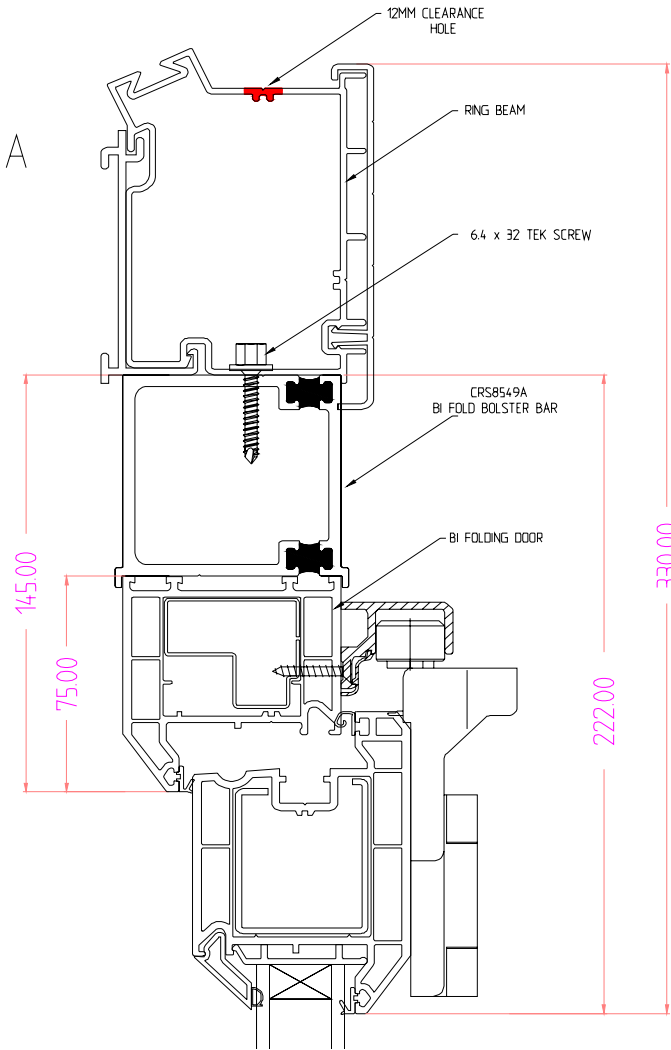
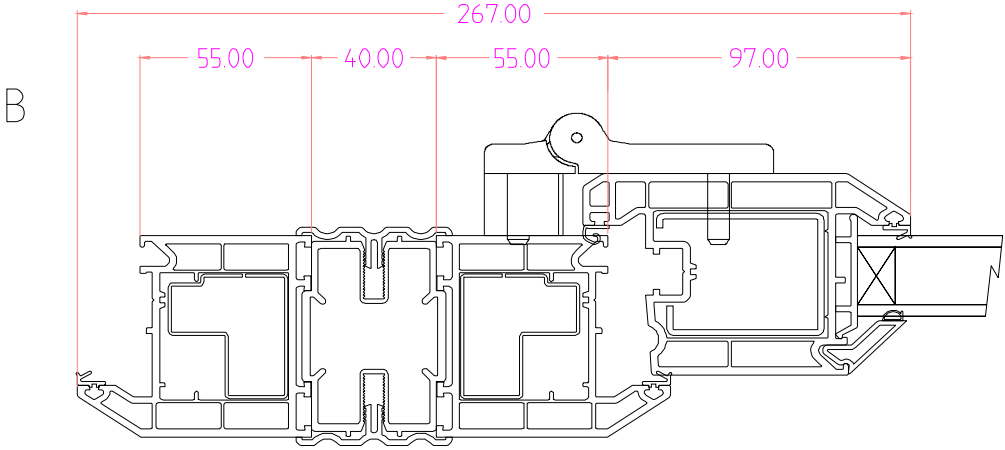
Available in 3 colours: - White, Rosewood & Golden Oak in 4m lengths.



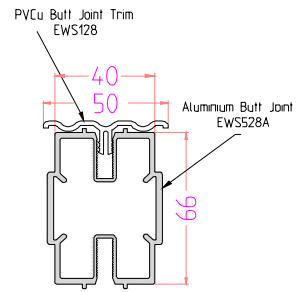
X Sections



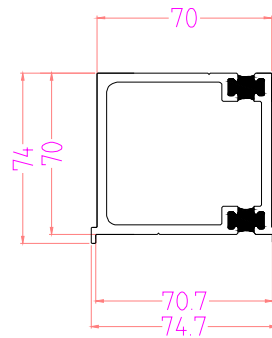
X Sections



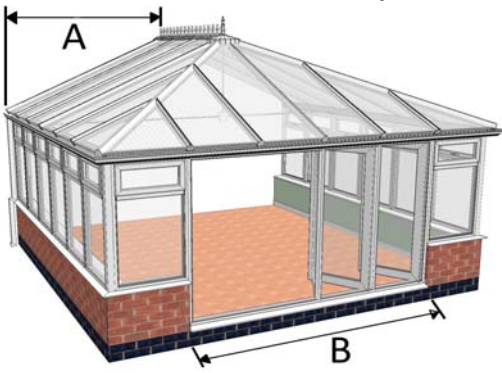
EWS528A & EWS128
40mm Butt Joint



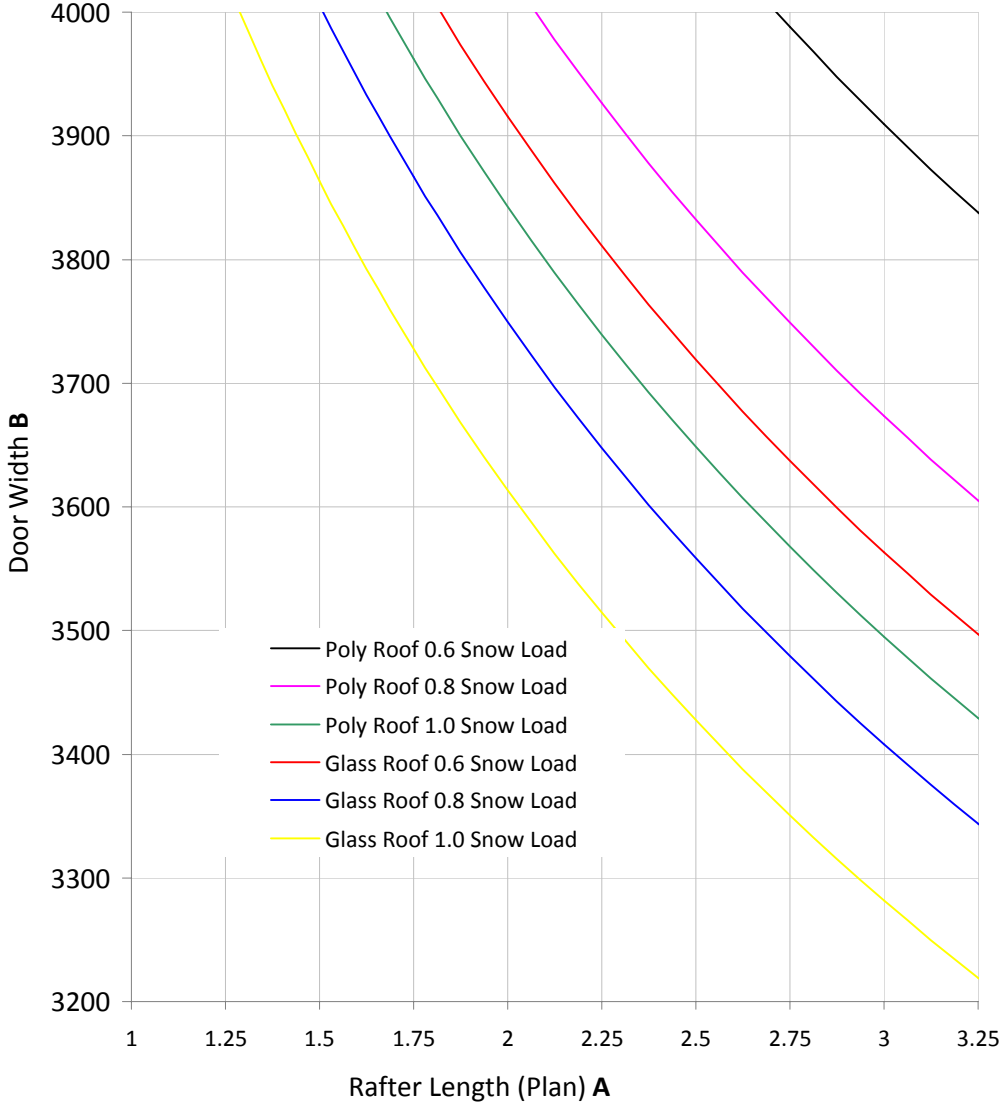
CRS8549A
Bi Fold Bolster Bar



Section 2 : Span Chart: Edwardian Frontage

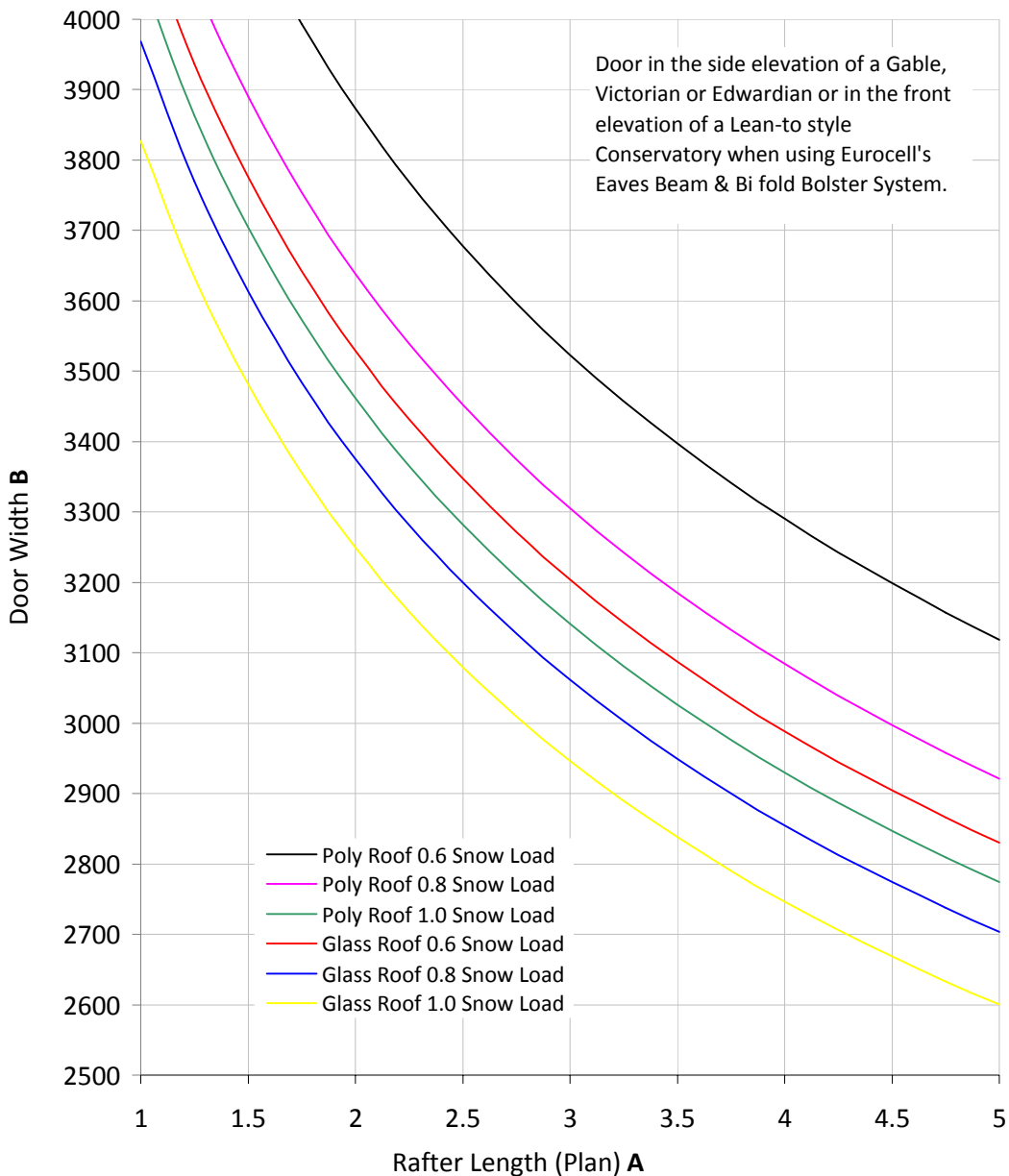


Door in the front elevation of a Edwardian style Conservatory when using Eurocell's Eaves Beam & Bi fold Bolster System



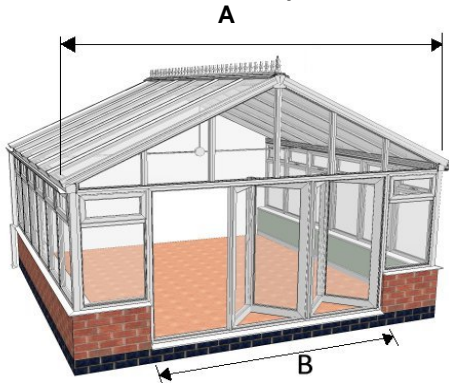
Please Note: A minimum frame of 500mm Inc Coupler must be fitted either side of the doors.

Section 2 : Span Chart: Lean-to/Duo Pitch/Gable

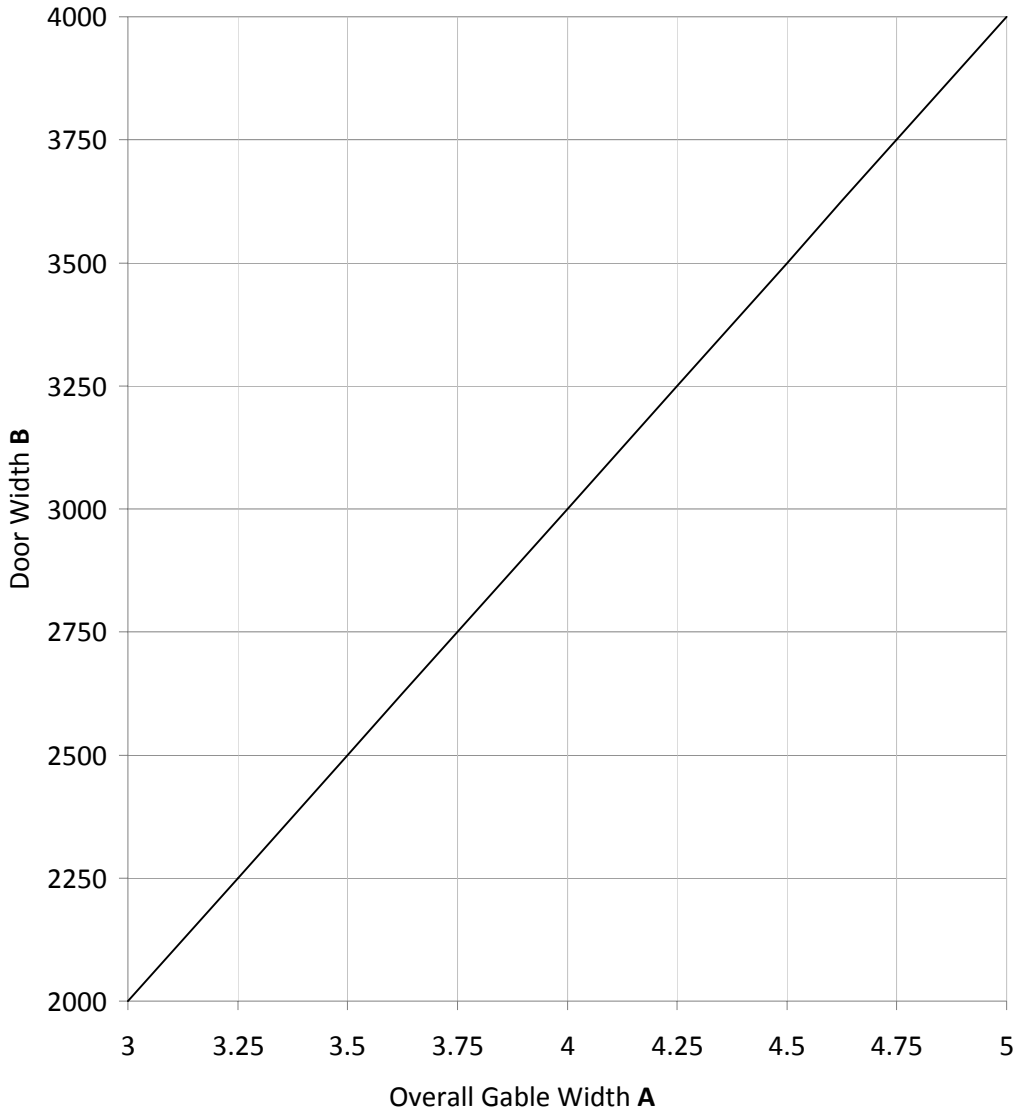


Please Note: A minimum frame of 500mm Inc Coupler must be fitted either side of the doors.

Section 2 :Span Chart: Gable Conservatory

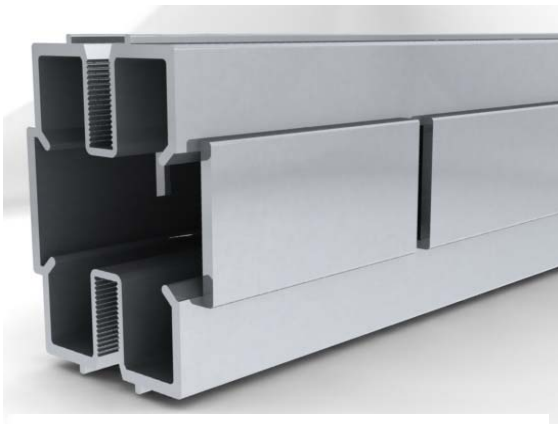
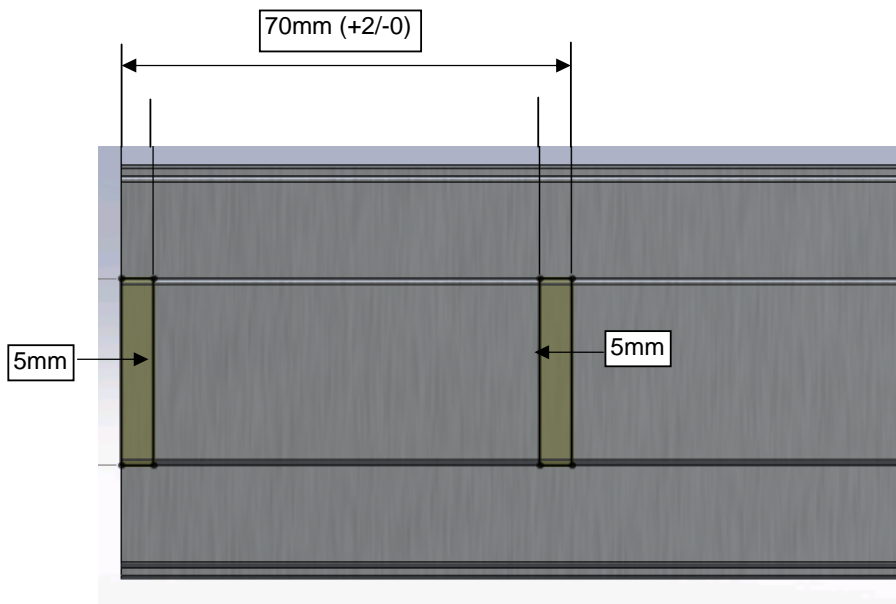


Door in the front elevation of a Gable style Conservatory when using Eurocell's Eaves Beam & Bi fold Bolster System.



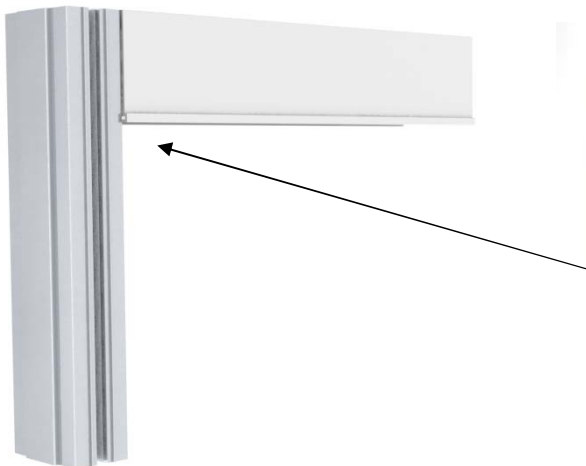
Please Note: A minimum frame of 500mm Inc Coupler must be fitted either side of the doors.

Section 3 : Butt Joint Fabrication



2 x 5mm notches are required in the butt joint to allow the bi fold bolster bar to sit tight & secure against the butt joint. Please see the drawing above for the position of the notches.

If EWS528A Butt joint is not being used, please ensure that suitable structural replacement posts are used.



Section 4 : Installation Details

Ring Beam

Once you have fitted the frames and bi-folding door in position, cut the bi-fold bolster to size and sit it on top of the doors. Now the Ring beam can be positioned in it's correct location and secured. A 12mm Clearance must be drilled through the top face of the Ring Beam. Holes are to be positioned accordingly by where the bolster bar is fitted to the ring beam, 50mm from each end of the bolster with equal spacings of between 300mm & 350mm.

Please use the fixings provided.

